

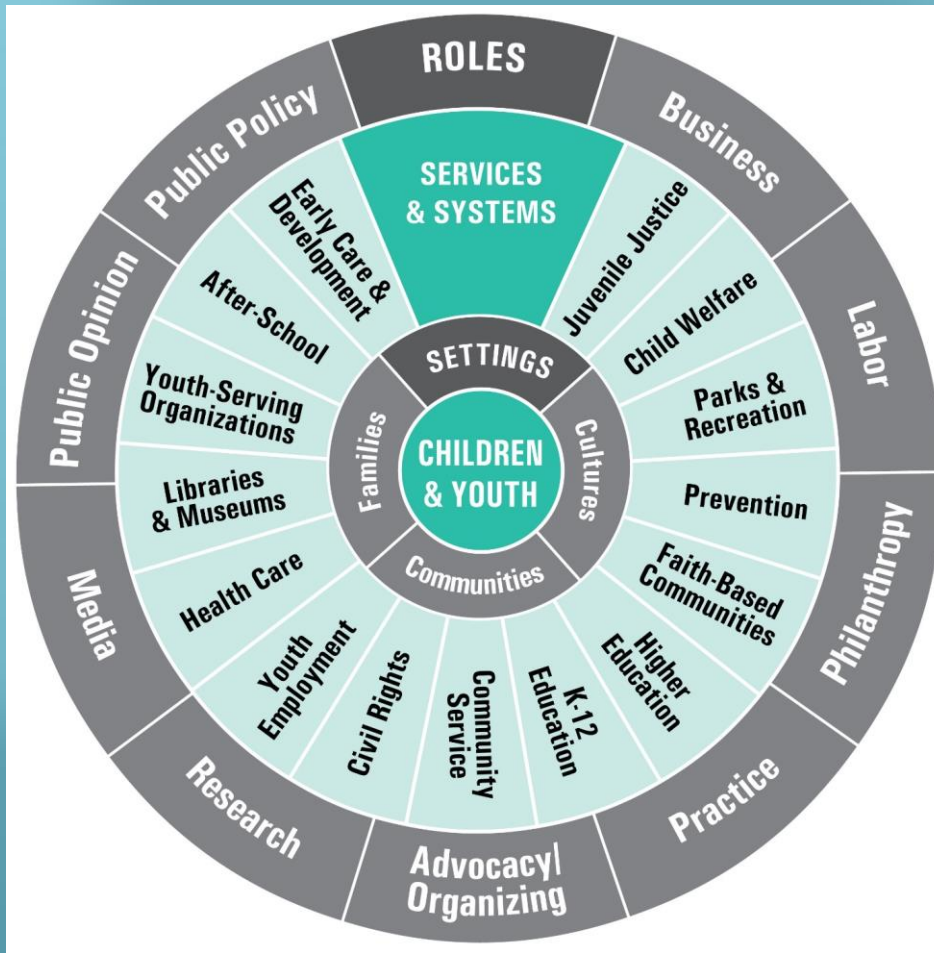
NC STATE UNIVERSITY  Institute for Emerging Issues

kidonomics

INVESTING EARLY IN OUR FUTURE

Outline of the day:

- Who is in the room?
- Collective Impact – everyone has a role
- Impacting child outcomes
- Join two deep dive workshops
- Discuss our collective learning
- Leave with action steps



Poll Question

- Which role are you in?
 - Business
 - Policy
 - Practice
 - Philanthropy
 - Research
 - Advocacy/Intermediary
 - Other

There are several types of problems:

Simple

Baking a Cake



Complicated

Sending a Rocket to the Moon



Complex

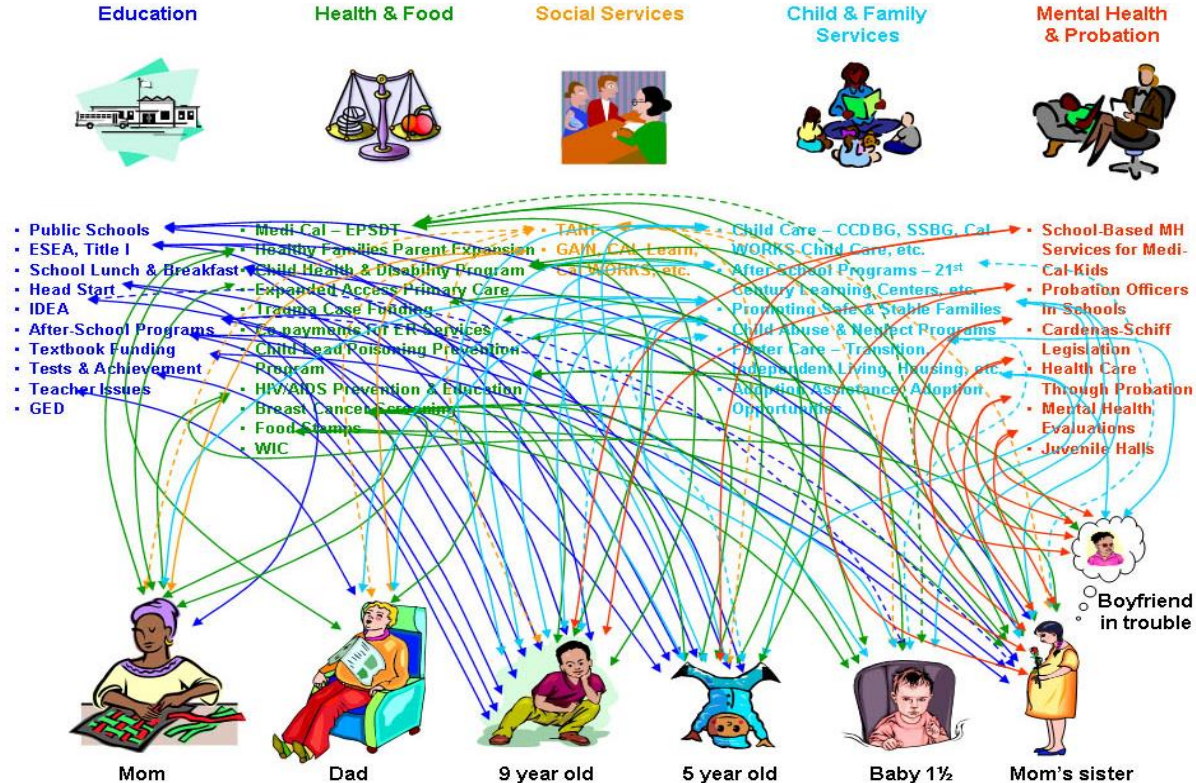
Raising a Child



Social sector treats problems as simple or complicated

Business as usual

... see a problem, convene a task force, create a program...
has created a tangle of inefficiencies





Stepping up

From program performance to collective impact

Baseline – a focus on individual program performance.

independent organizations in same community

A few organizations work together to align **what they do** in ways that get better outcomes

complementary services partners

Lots of organizations decide to work together as a network to **improve** what they do and **advocate for what works**

consolidated services and connected networks

collective impact governance

Lots of organizations and stakeholders **work together to move outcomes** for all children and families

Poll Question

Where does your work fit on the spectrum?

- White
- Pink
- Green
- Purple

Five Conditions to Achieve Collective Impact

Common Agenda

- **Common understanding** of the problem
- **Shared vision** for change

Shared Measurement

- **Collecting data** and **measuring results**
- Focus on **performance management**
- **Shared accountability**

Mutually Reinforcing Activities

- **Differentiated approaches**
- Willingness to **adapt individual activities**
- **Coordination** through joint plan of action

Continuous Communication

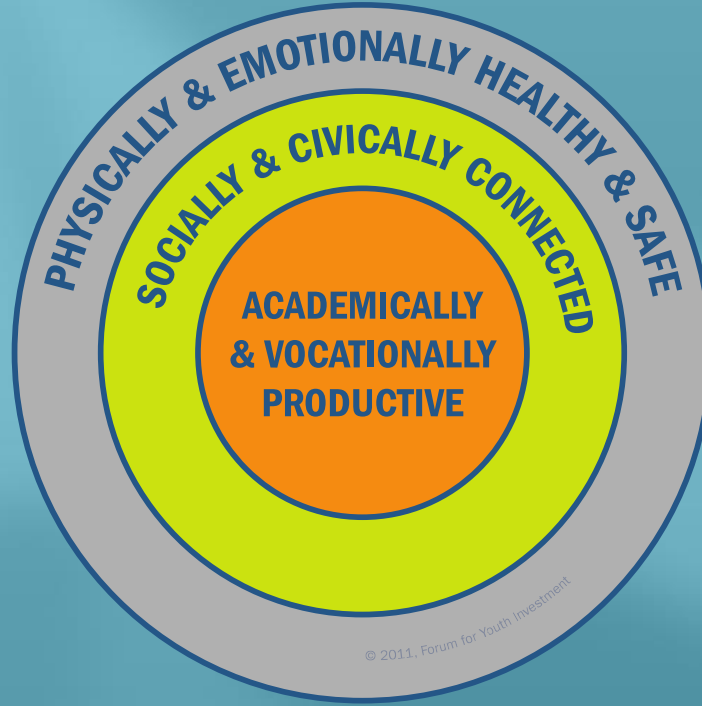
- **Consistent** and **open communication**
- Focus on **building trust**

Backbone Support

- Separate organization(s) with **staff**
- Resources and skills to **convene** and **coordinate** participating organizations

What are we trying to impact?

The Readiness Target

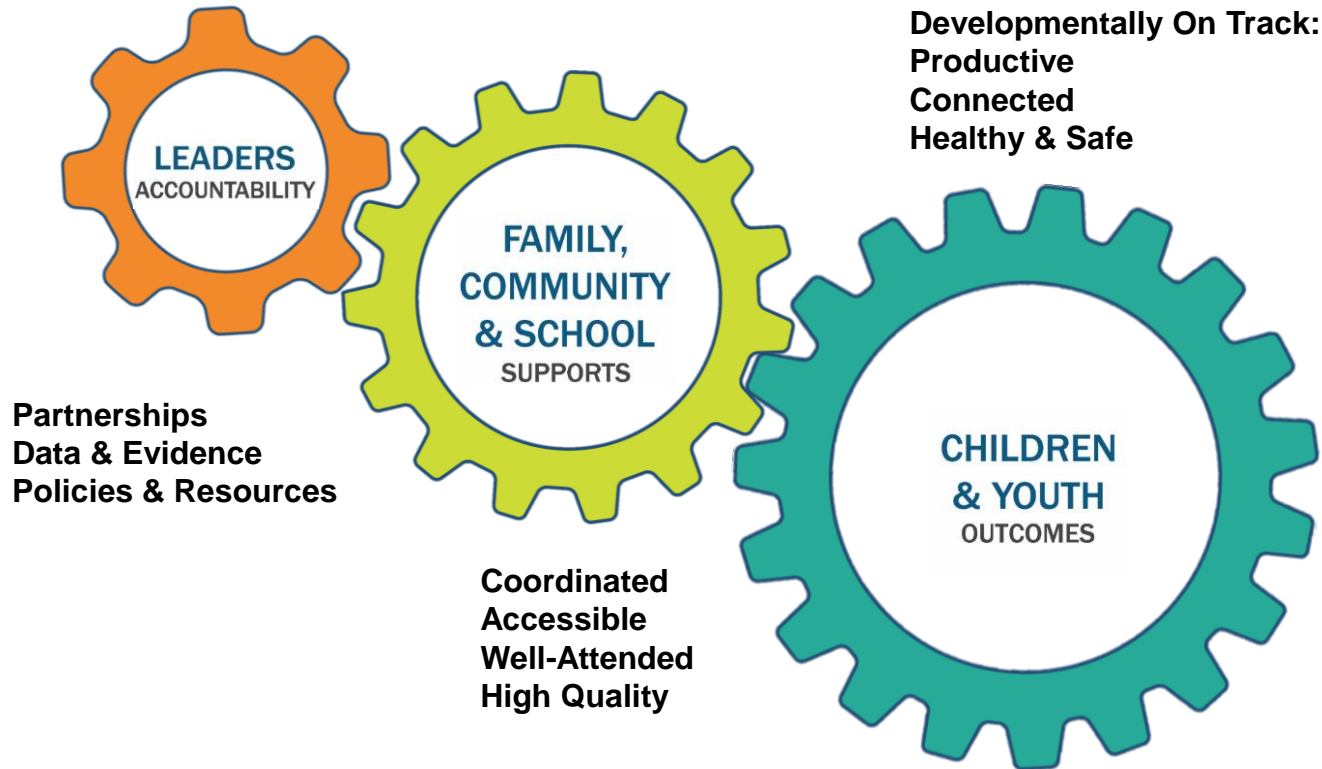


Poll question

Which outcomes are you most focused on?

- Academic
- Social/Emotional
- Physical Health/ Safety
- Equal amount of each
- Other

Our theory of change focuses on challenging leaders to think differently & act differently...



Moving the small gear makes a **BIG** difference



Education



Health & Food



Social Services



Child & Family Services



Mental Health & Probation



Leaders

Services
and
Supports

Child and
Youth
Outcomes

- Public Schools
- ESEA, Title I
- School Lunch & Breakfast
- Head Start
- IDEA
- After-School Programs
- Textbook Funding
- Tests & Achievement
- Teacher Issues
- GED
- Medi-Cal – EPSDT
- Healthy Families Parent Expansion
- Child Health & Disability Program
- Expanded Access Primary Care
- Trauma Case Funding
- Ca. payments for ER Services
- Child Lead Poisoning Prevention Program
- HIV/AIDS Prevention & Education
- Breast Cancer Screening
- Food Stamps
- WIC
- TANF
- GAIN, CAL Learn, CalWORKS, etc.
- Child Care – CCDBG, SSBG, CalWORKS Child Care, etc.
- After-School Programs – 21st Century Learning Centers, etc.
- Promoting Safe & Stable Families
- Child Abuse & Neglect Programs
- Foster Care – Transition, Independent Living, Housing, etc.
- Adoption Assistance, Adoption Opportunities
- School-Based MH Services for Medi-Cal-Kids
- Probation Officers in Schools
- Cardenas-Schiff Legislation
- Health Care Through Probation
- Mental Health Evaluations
- Juvenile Halls



Mom



Dad



9 year old



5 year old



Baby 1½



Mom's sister



Boyfriend
in trouble

Today's workshops

1. Starting on a Shoestring
2. Communications and Engagement
3. Issues in Program Selection and Implementation
4. Effectively Using Data to Drive Your Effort
5. Working Effectively Across Organizations
6. Local Funding for Early Learning: A Community Toolkit

Afternoon session

Today's workshops

1. Starting on a Shoestring
2. Communications and Engagement
3. Issues in Program Selection and Implementation
4. Effectively Using Data to Drive Your Effort
5. Working Effectively Across Organizations
6. Local Funding for Early Learning: A Community Toolkit

Afternoon poll question

- What are the most common implementation challenges you experience in your work?
- No shared plan
- Inadequate resources
- Low capacity
- Timelines too rushed

Afternoon poll question

The most difficult thing about engaging with our stakeholders is figuring out:

- how to reach them all
- what's important to them
- how to measure engagement
- None of these / something else

Afternoon poll question

- Do you have an agreement in place across organizations to make improvements on community indicators?
- Yes
- Sort of
- No

Afternoon poll question

- Should local governments invest in early learning programs to supplement state and federal dollars?
- Yes
- No
- Don't know

Last Poll Question

- What's the first thing you will take action on when you return home?